

CASE STUDY

# A Multinational Automobile Manufacturer Across Various Geographies

Centralized transportation  
planning and tracking





# About Customer

Implementing inbound logistics planning and execution platform for multiple geographies

One of the largest automobile manufacturer globally

---

## Industry

Automobile manufacturer

## Solution Area

Transportation planning and execution

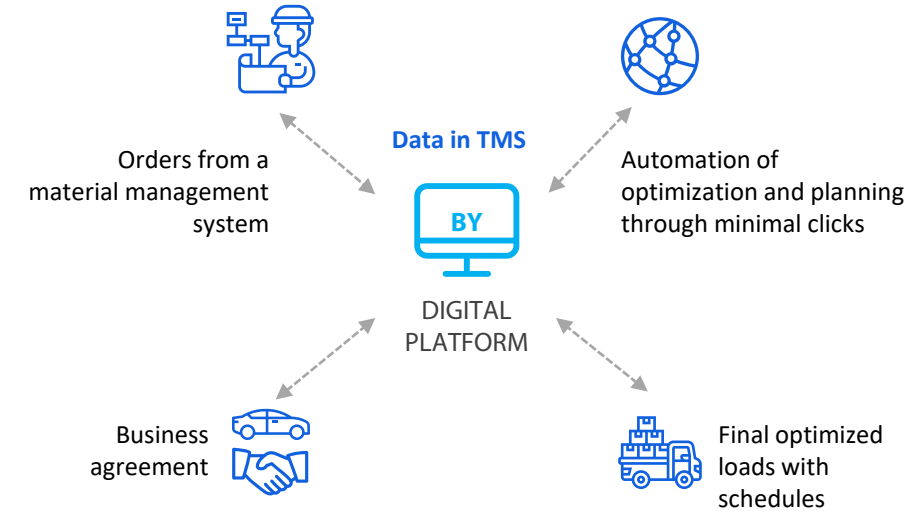


## The Engagement

- End-to-end automated planning
- Transport forecasting capabilities to overcome capacity issues
- Develop in-house centralized planning capability
- Real-time visibility
- KPIs and performance tracking
- Transportation network design

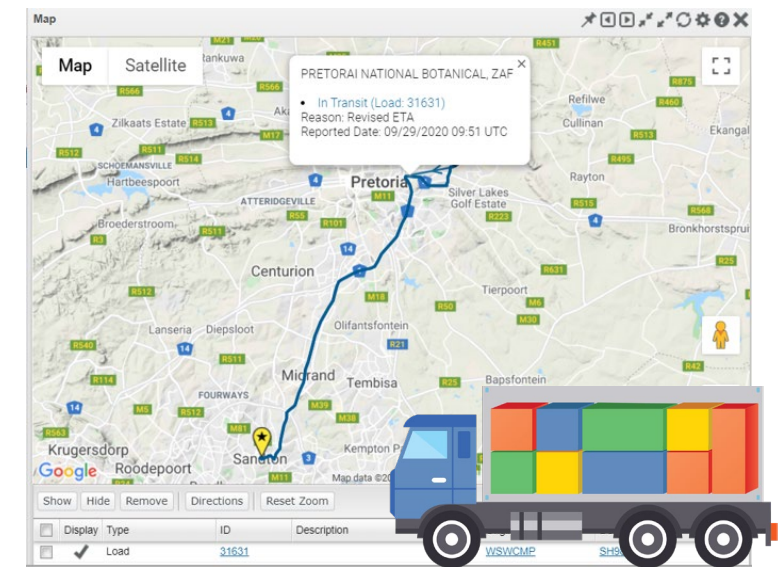
## Business Challenges

- The volume of data and variables
- Planning based on a fixed (skeleton) route model
- 3D modelling of loads
- Automation of planning and post-planning activities
- Multiple resources handling different phases of planning
- Network design/refresh done manually with multiple excel sheets



## Business Benefits

- Centralized planning across various geographies
- Superior network design, reducing the freight spent
- Better utilization of loads incorporating 3D parameters, reducing the freight spent and carbon footprint
- Reduced capacity issues with forecasting/advanced visibility
- Real-time visibility of the vehicles
- Reduced resource requirement for the overall planning





SL4 TECHNOLOGY INDIA PRIVATE LIMITED  
Startup Huts, Unit-7, Ground Floor, #2739,  
15th Cross, 27th Main, Sector-1, HSR  
Layout, Bangalore, KA, 560102, India.  
India: +91 9916953370  
[contact@smartlinkstech.com](mailto:contact@smartlinkstech.com)  
[www.smartlinkstech.com](http://www.smartlinkstech.com)

